

Whole Despatch Advice message DESADV

Contributors/Authors

This recommendation has been generated by the efforts of the following professionals:

Wholesalers:

ALLIANCE HEALTHCARE
CERP BRETAGNE NORD
CERP RHIN RHONE MEDITERRANEE
CERP ROUEN
CONTINENTAL PHARMACEUTIQUE
OCP REPARTITION
PHOENIX PHARMA

Depositories:

C.S.P.
EURODEP

Pharmaceutical laboratories and manufacturers:

3M SANTÉ
AGUETTANT
BAXTER
BAYER SANTÉ FAMILIALE
BIOCODEX
BMS
BMS/UPSA
BOUCHARA RECORDATI
BROTHIER
CHIESI
COLOPLAST
GSK
JANSSEN CILAG
LEO PHARMA
MERCK LIPHA SANTÉ
NORGINE PHARMA
PFIZER
ROCHE
SANOFI PASTEUR MSD
SANOFI AVENTIS

Introduction

The dematerialization of exchanges between trading partners of the pharmaceutical chain makes it possible to automate and secure the data distribution and data integration into information systems.

The systematization of the exchanges is critical to support the information necessary to comply with the traceability requirement for human-use medicinal products, which must be implemented by December 31, 2010 (see Cahiers CIP/ACL No1 and 2).

The Notice published by the AFSSAPS in the 'Official Journal' of March 16, 2007 specifies that:

'Securing both the commercial and pharmaceutical data justifies the systematic use of information technology (EDI for instance) for interchanges between the various operators, starting from the first placing on the market to the delivery to authorized recipients. The AFSSAPS is very much in favour of achieving this systematization, as soon as possible, and consistently with the implementation schedule for the various coding elements on packaging'.

As the current DESADV message evolves towards the 'whole Despatch Advice' message described in the present document, the data that are related to the despatch with a complete description of the delivery are included in the traceability data (batch number and expiry date).

According to the schedule defined between the actors, the implementation of the new 'whole Despatch Advice' message by the manufacturers is recommended by July 1st, 2009.

This message is fitted to the exchanges of human-use medicinal products and is compatible with the exchanges of veterinary medicinal products and healthcare products (medical devices, foodstuffs for particular nutritional uses, derma-cosmetic, veterinary and other products) that are distributed in the pharmaceutical circuit.

Goal of the recommendation

The goal of this recommendation is to make available a reference document that is shared by all the partners in the pharmaceutical distribution chain (manufacturers, depositories and wholesalers). This document will describe the 'whole Despatch Advice message: DESADV' in a format that meets the EANCOM International Standards.

For medicinal products and healthcare products, some adaptations of the standard format were necessary.

References used to carry out this work:

- The 'Despatch advice DESADV' message such as it was described in the CIP brochure of May 2001: 'Standardisation of the computerized follow-up of medicinal product transport' performed as part of the distributors-manufacturers exchanges;
- The EANCOM message (Message Type: DESADV – Reference directory: D.01B – EANCOM Subset version: 007).

Function of the ‘whole despatch advice’ message

For the supplier:

Before the goods are delivered to the recipient, the ‘whole despatch advice’ message provides the data related to despatch, under a dematerialized form, including a complete description of the despatch units.

For the recipient:

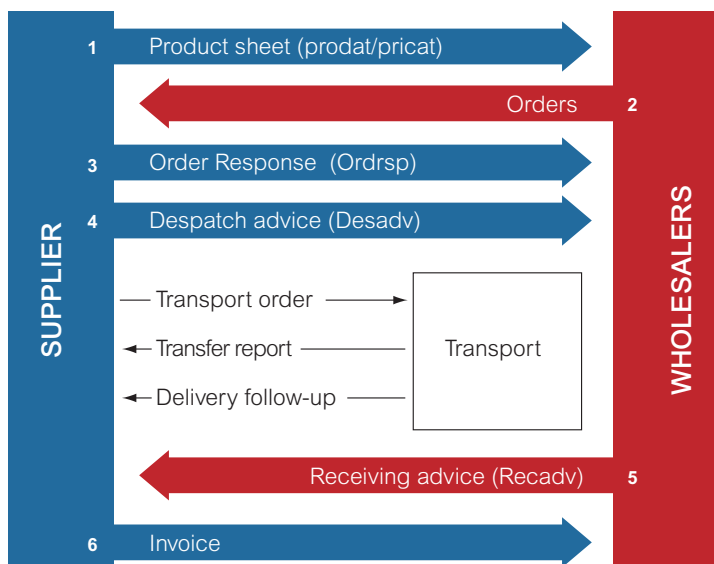
The ‘whole despatch advice’ makes it possible to automatically include into information systems the data related to the goods which will be received, to anticipate and to optimize the receipt treatment.

In addition, the conjugated use of both the ‘Whole Despatch Advice’ (DESADV) and the ‘Receiving Advice’ (RECADV) messages can optimize the dispute resolution for every partner.

Principles of the DESADV message

The DESADV message fits in a logical sequel of dematerialized exchanges and should guarantee that the necessary information is carried to the other messages.

WHOLESALEMAN-MANUFACTURERS EXCHANGES



The DESADV message matches a unique despatch point and a single place of delivery. It may contain various despatch products and units. It provides for a hierarchical description of the consignment, despatch unit by despatch unit, from the highest level (for instance, pallets, then packages) to the lowest level (details of each item).

The DESADV message follows the transmission of an Order message emitted by the customer to the supplier. The order number must be reminded in the despatch advice.

An order message generates one or several despatch advices, one delivery slip and one means of transport. Therefore, when an order is delivered in several lots, the same order number is found on several DESADVs.

In general, only one order number is treated at a time by a DESADV message. In some situations, the supplier may gather several order numbers in the same DESADV (in case of remainders for instance). You will find examples of both these alternatives described in the Appendix. In any case, the order number is specified in the item line.

It is recommended that the despatch advice is emitted upon closing the truck’s doors.

Every invoice should refer to a despatch advice. The order number and the despatch advice number should be reminded in the invoice.

Conditions of exchange

EDIPHARM will ensure the transport of information between the partners.

The message structure is described in the EDIPHARM document entitled ‘Format standard – AVIS D’EXPEDITION – Profil Grossistes Laboratoires/ Dépositaires – DESADV A1’ (standard format— DESPATCH ADVICE – Wholesalers Laboratories/ Agents Profile – DESADV A1’).

Implementation schedule

In order to optimise the exchanges and the implementation of the human-use medicinal product traceability, the development of ‘whole despatch advice’ messages is recommended **by July 1st, 2009**.

Description of the message

The message is divided into 6 parts:

- A. Message routing information
- B. Message heading information
- C. Packaging sequence information
- D. Packing list information
- E. Item information
- F. Message footer information

Each part of the message includes one or several subparts. Every subpart contains categories.

All the data are presented in a table. The table contains the following columns:

Whole despatch advice message DESADV								
Remote transmission message: Supplier to customer								
Segment	No.	Category	Type Size	Status	Definition	Example	Suggestions	Other message involved
		<p>Category: Contains the category name</p> <p>Category number: This number is sometimes used to make links between categories</p>		<p>Status: Indicates if the category is obligatory (O), conditional (C) or optional (F). The term 'conditional' means that the category is filled if the data exists for a given product</p>	<p>Definition: Explains the nature of the expected data</p>	<p>Example: Contains one of the possible values which is present in the example given</p>	<p>Suggestion: Lists the advices to use this category</p>	<p>Other message involved: Indicates in which other message the same data which corresponds to the same category is useful</p>
			<p>Type-Size: Contains 'an' value for alphanumeric or 'n' for numeric, followed by a value that indicates the number of characters and defines the maximum data size</p>					

Whole despatch advice message DESADV

Remote transmission message: Supplier to customer

Segment	No.	Category	Type Size	Status	Definition	Example	Suggestions	Other message involved
---------	-----	----------	-----------	--------	------------	---------	-------------	------------------------

A. MESSAGE ROUTING INFORMATION

A.1. Identification of the interchange partners

DEBINT	1	Identification of the originator	an35	O	Robot code of message originator or other identifier	271 (Eurodep)	The common code is the ROBOT code	
DEBINT	2	Identification of the recipient	an35	O	Robot code of message recipient or other identifier	015 (Cerp Rouen)	The common code is the ROBOT code	
DEBINT	3	Test indicator	an1	O	Indicates if the message is the 'Test' or 'Production' type	T	P = Production T= Test	
DEBINT	4	Version number of the message	an1	O	Used to manage the evolution of the message structure	A	As a rule, the first version is named version 'A'	

B. MESSAGE HEADER

B.1. General message information

DEBMSG	5	Document No.	an35	O	<u>Unique No. given by the message originator, which identifies the Despatch Advice message</u>	12345	It can be equal or different from the No. of the actual despatch advice or the No. of paper delivery slip which is indicated in category 15	
DEBMSG	6	Message function	an3	O	The message function indicates the document type ORIGINAL, DUPLICATE or COPY	ORIGINAL	<p><i>ORG = ORIGINAL:</i> Corresponds to the 1st message dispatch</p> <p><i>CPY = COPY:</i> : Corresponds to the retransmission of the identical message for action, upon specific request from the recipient (in case the first consignment has failed for instance)</p> <p><i>DUP = DUPLICATE:</i> Corresponds to a third party dispatch for information purposes (if the message was to be processed in 2 locations for instance)</p>	

Segment	No.	Category	Type Size	Status	Definition	Example	Suggestions	Other message involved
DEBMSG	7	Type of despatch advice	an3	O	Indicator used to specify the message type: Despatch advice or return advice	351	351 = Despatch advice 35E = Return advice	
DEBMSG	8	Request for Receiving Advice message	an3	F	This simple indicator, with a 'Y/N' type, allows the laboratory to ask the wholesaler for a Receiving Advice return message			
B.2. Date and/or time of document, despatch and delivery								
DATHEU 137	9	Document date and time	an35	O	Indicates the date and time the despatch advice is created	200910191615 (October 19, 2009 at 4:15 PM)	Related to category No. 5 'Document No.' Format: YYYYMMDDHHMM or YYYYMMDD	
DATHEU 11	10	Date and time of despatch	an35	O	Indicates the date and time goods are picked-up by the carrier (upon closing the truck's doors)	200910191600 (October 19, 2009 at 4:00 PM)	Format: YYYYMMDDHHMM or YYYYMMDD	
DATHEU 191	11	Estimated date and time of delivery	an35	O	The date is compulsory (not contractual). Even if it is calculated in relation to the transport map, it allows distributors to calculate a receipt load forecast. The time is optional	20091023 (October 23, 2009)	Format: YYYYMMDDHHMM or YYYYMMDD	
B.3. Physical parameters related to consignment and delivery								
MESPHY AAD	12	Total gross weight	n18	O	Total gross weight of despatch, including the packaging	406.500 kg	Numeric format with 3 decimals, in kilograms	
MESPHY ABJ	13	Gross volume	n18	F	Gross volume of despatch, including the packaging	2,530 m ³	Numeric format with 3 decimals, in cubic meters	
MESPHY AAC	14	Total net weight	n18	F	Total net weight of despatch, excluding the packaging		Numeric format with 3 decimals, in kilograms	
B.4. References (order/delivery slip)								
REFEXP DQ	15	Delivery slip number	an70	O	Unique No. assigned by sender which is the reference of the Despatch Advice = No. of Delivery Slip.	3459762		

Segment	No.	Category	Type Size	Status	Definition	Example	Suggestions	Other message involved
REFEXP UC	16	Supplier order number	an70	F	Internal No. assigned by the supplier upon ordering			
REFEXP CN	17	Number of carrier delivery	an70	O	Internal reference No. assigned by the supplier when handed in to the 1 st carrier	58667437569 5430238	This is not the receipt No. but the supplier may request the carrier to report it on the receipt in order to better insure the links in the various delivery steps	
REFEXP CR	18	Customer number assigned by the buyer	an70	F	Internal buyer number, different from the order No.			ORDER Order receipt
REFEXP BM	19	Transport order number / Waybill	an70	F	Data generated by the shipper			
B.5. Partner groups								
B.5.1. Identification of the partners								
IDPART BY	20	Buyer	an35	O	Buyer identification by a SIRET, CIP, SIREN, GLN code or ROBOT Edipharm code	015	The common code is the ROBOT code	ORDER Order receipt
IDPART SU	21	Supplier	an35	C	Supplier identification by a SIRET, CIP, SIREN, GLN code or ROBOT Edipharm code		The common code is the ROBOT code. It is compulsory if the supplier is different from the message sender (see category 23). In the case of agents for instance.	ORDER Order receipt
IDPART ST	22	Delivery Party	an35	O	Delivery party identification by a SIRET, CIP, SIREN, GLN code or ROBOT Edipharm code	599002	It is the CIP code of the Distributor's delivery agency	ORDER Order receipt
IDPART SH	23	Sender	an35	O	Sender identification by a SIRET, CIP, SIREN, GLN code or ROBOT Edipharm code	271	The common code is the ROBOT code	

Segment	No.	Category	Type Size	Status	Definition	Example	Suggestions	Other message involved
IDPART UC	24	Ultimate consignee/final recipient	an35	F	Ultimate consignee identification by a SIRET, CIP, SIREN, GLN code or ROBOT Edipharm code Notion of ultimate place of delivery identified with a standardized code. They are the delivery dispatching institutions		Examples: Successive deliveries at the distributor's between a central or main institution and secondary institutions. Different from the 'Ultimate customer' notion or 'Sous-livré' - <i>third party entity to whom the final recipient transfers part of a delivery</i> - used in the case of partial delivery (see E12 category 116 Ultimate place of delivery and category 118 Ultimate recipient) It is the CIP code of every distributor's agencies to be ultimately delivered	ORDER
IDPART MR	25	Message recipient	an35	F	Message recipient identification by a SIRET, CIP, SIREN, GLN code or ROBOT Edipharm code As the default option, the usual message recipient is the buyer and it is generated according to the standard EDI message rules. This information makes it possible to identify another message recipient if different from the actual recipient or buyer (which is the 'physical' recipient for the products) or to identify an external provider			Order receipt
B.5.2. Partner's name								
NOMPAR	26	Partner's name	an35	F		SOC ACHAT	If needed, repeat this segment for every partner cited in B.5.1	
NOMPAR	27	Name continuation	an35	F				
B.5.3. Partner's address								
RUPAR1	28	Partner's address	an35	F		123, Creativity street	If needed, repeat this segment for every partner cited in B.5.1	
RUPAR1	29	Address continuation	an35	F				

Segment	No.	Category	Type Size	Status	Definition	Example	Suggestions	Other message involved
B.5.4. Partner's address - continued								
RUPAR2	30	Partner's address	an35	F		Imagination staircase	If needed, repeat this segment for every partner cited in B.5.1	
RUPAR2	31	Address continuation	an35	F		Left entrance		
B.5.5. Partner's city								
VILPAR	32	Zip code	an17	F		75001	If needed, repeat this segment for every partner cited in B.5.1	
VILPAR	33	City	an35	F		Paris		
VILPAR	34	Country	an3	F		FR		
B.5.6. Contact information								
CTCPAR IC / TR	35	Contact type	an3	F	To identify the contact persons Delivery or transport	Delivery contact	If there are several contacts per partner or several partners involved, this segment should be repeated This segment will only be completed for senders (see category 23) and suppliers (see category 21)	
CTCPAR	36	Identification of the department or employee	an17	F	Code which identifies the contact	00155	The common code is the ROBOT code	
CTCPAR	37	Department or employee	an35	F	Contact name	Mr Dupont		
B.5.7. Communication details of the contact person								
COMPAR TE	38	Telephone	an70	F		0139010101	If there are several contacts, the segment should be repeated This segment will only be completed for senders (see category 23) and suppliers (see category 21)	
COMPAR FX	39	Fax	an70	F				
COMPAR EM	40	E-mail address	an70	F				

Segment	No.	Category	Type Size	Status	Definition	Example	Suggestions	Other message involved
B.6. Delivery conditions								
CONLIV	41	Delivery conditions	an3	F	Delivery conditions coded by the INCOTERMS	Ex Works	Recommended for export Common examples: EXW – Ex Works FCA – Free Carrier FAS – Free Alongside Ship FOB – Free on board CFR – Cost and Freight CIF – Cost, Insurance and Freight CPT – Carriage Paid To CIP – Carriage and Insurance Paid (To) DAF – Delivered At Frontier DES – Delivered Ex Ship DEQ – Delivered Ex Quay DDU – Delivered Duty Unpaid DDP – Delivered Duty Paid ... Other qualifiers may be used (see GS1 reference table)	ORDER
B.7. Information related to the transport conditions								
INFOTP	42	Mode of transport	an3	C		Road	Information which is compulsory for export Common examples: 10 Sea transport 20 Rail transport 30 Road transport 40 Air transport ... Other qualifiers may be used (see GS1 reference table)	ORDER
INFOTP	43	Means of transport	an3	C		Truck	Information which is compulsory for export Common examples: 31 Truck 23 Bulk wagon 24 Express rail ... Other qualifiers may be used (see GS1 reference table)	

Segment	No.	Category	Type Size	Status	Definition	Example	Suggestions	Other message involved
INFOTP	44	Carrier identification	an17	O	Identification of carrier (the first carrier) with a SIRET or GLN code	3016758973452	GLN code should be used preferably. Eventually, a carrier directory will be managed and made available by the CIP	
B.8. Information on the transport equipment								
INFEQP	45	Equipment qualifier	an3	F	To inform the recipient of the equipment used for the transport of goods	Container	Information which is recommended for export Common examples: CN Container RR Railroad TE Trailer PA Pallet ... Other qualifiers may be used (see GS1 reference table)	
B.9. Seal number								
NUMSCE	46	Seal number	an10	F		5645541245		
NUMSCE	47	Organisation responsible for the seal	an3	F		Customs	Common examples: CA Carrier CU Customs SH Shipper ... Other qualifiers may be used (see GS1 reference table)	
C. DATA RELATED TO THE PACKAGING SEQUENCE								
NIVEAU	48	Sequence number	an35	O	This numbering is used to track the level described in the message continuation	See appendix	If there are several levels in the despatch unit described, the segment should be repeated	
NIVEAU	49	Identification of a parent level	an35	O	Number used to organize the load into a hierarchy Indicates that the hierarchical level described is the child of another level	See appendix	For instance, a group of boxes is the child of a pallet Note: The very first level (global shipping) does not have a parent level	

Segment	No.	Category	Type Size	Status	Definition	Example	Suggestions	Other message involved
D. DATA RELATED TO THE PACKING LIST								
D.1. Number, type and marking of the despatch units within the hierarchical level described								
NBUEXP	50	Number of despatch units	n8	O	It is the number of despatch units with the same type at the hierarchical level described (a number of pallets or boxes)	See appendix	If there are several packaging types in the despatch unit described, the category should be repeated Except for the highest hierarchical level (global shipping), this number is always 1 as each despatch unit is described individually	
NBUEXP	51	Marking type for the packaging	an3	O	It is the graphical representation (or media) for the coding on packaging. The value should be consistent with the information which appears in the Marking instruction category No.77		XX Datamatrix XY RFID 50 EAN13 barcode 51 ITF-14 barcode 52 GS1-128 barcode 99 No marking	
NBUEXP	52	Packaging cost	an3	C			Common examples: 1 Packaging cost paid by supplier 2 Packaging cost paid by recipient 3 Packaging cost not charged 4E Rented 5E Exchangeable 6E Returnable 7E Lost ... Other qualifiers may be used (see GS1 reference table)	
NBUEXP	53	Packaging type of the despatch unit described	an3	O			Common examples: 08 Lots pallet 09 Recyclable pallet CT Box MTE Unitization	

Segment	No.	Category	Type Size	Status	Definition	Example	Suggestions	Other message involved
NBUEXP	54	Packaging return cost	an3	C			1 Paid by customer 2 Free of charge 3 Paid by supplier This cost may exist in the future for some types of 'precious' packaging	
D.2. Physical data related to the despatch unit in the hierarchical level described								
D.2.1. Measurements related to the transport								
MESURE TRA TC	55	Transport temperature	n18	C	Indicates the temperature in Celsius degrees which must be maintained during transport (either on the whole load, or per despatch unit)		The indication of the temperature is compulsory for products in the cold chain or products that are especially sensitive. There are 3 formats to be selected: - a target value (category 55, Measurement value) - a range (categories 56 and 57, Minimum and Maximum) - a threshold that should not be exceeded (category 57, Maximum)	
MESURE TRA TC	56	Minimum transport temperature	n18	C				
MESURE TRA TC	57	Maximum transport temperature	n18	C				
MESURE TRA AAO	58	Transport humidity	n18	F	Indicates the humidity level in percentage which must be maintained during transport (either on the whole load, or per despatch unit)	50	There are 3 formats to be selected: - a target value (category 58, Measurement value) - a range (categories 59 and 60, Minimum and Maximum) - a threshold that should not be exceeded (category 60, Maximum)	
MESURE TRA AAO	59	Minimum transport humidity	n18	F		30		

Segment	No.	Category	Type Size	Status	Definition	Example	Suggestions	Other message involved
MESURE TRA AAO	60	Maximum transport humidity	n18	F		70		
D.2.2. Measurements related to the storage								
MESURE STO TC	61	Storage temperature	n18	C	Indicates the temperature in Celsius degrees which must be maintained during storage (either on the whole load, or per despatch unit)		<p>The indication of the temperature is compulsory for products in the cold chain or products that are especially sensitive.</p> <p>There are 3 formats to be selected:</p> <ul style="list-style-type: none"> - a target value (category 61, Measurement value) - a range (categories 62 and 63, Minimum and Maximum) - a threshold that should not be exceeded (category 63, Maximum) <p>If there are several measurements to be tracked, the category should be repeated.</p>	
MESURE STO TC	62	Minimum storage temperature	n18	C		2		
MESURE STO TC	63	Maximum storage temperature	n18	C		8		
MESURE STO AAO	64	Storage humidity	n18	F	Indicates the humidity level in percentage which must be maintained during storage (either on the whole load, or per despatch unit)		<p>There are 3 formats to be selected:</p> <ul style="list-style-type: none"> - a target value (category 64, Measurement value) - a range (categories 65 and 66, Minimum and Maximum) - a threshold that should not be exceeded (category 66, Maximum) 	
MESURE STO AAO	65	Minimum storage humidity	n18	F				

Segment	No.	Category	Type Size	Status	Definition	Example	Suggestions	Other message involved
MESURE STO AAO	66	Maximum storage humidity	n18	F				
D.2.3. Packaging weight								
MESURE AAB	67	Unit gross weight of the packaging	n18	O	Indicates the gross weight of the packaging for the hierarchical level described; includes packaging and equipment (e.g. pallet)	For the 1 st level Weight of 2 pallets 399,000 kg	Format: Numeric with 3 decimals, in kilograms	
MESURE AAA	68	Unit net weight of the packaging	n18	C	Used in the export framework		Format: Numeric with 3 decimals, in kilograms	
D.2.4. Physical dimensions of packaging								
MESURE HT	69	Height	n18	F	Packaging height for the hierarchical level described (pallet, package)	For the 1 st pallet 120	Format: 999 cm (without decimal)	
MESURE LN	70	Length	n18	F	Packaging length for the hierarchical level described (pallet, package)		Format: 999 cm (without decimal)	
MESURE WD	71	Width	n18	F	Packaging width for the hierarchical level described (pallet, package)	For the 1 st pallet 80	Format: 999 cm (without decimal)	
D.2.5. Quantity of consumer units per despatch unit								
QTECON	72	Number of consumer unit/ despatch unit	an35	C	Specifies the quantity of consumer units per despatch unit described in category 50	60	<p>The information is compulsory for a single product despatch unit Example: A standard box (=guide) -> box of 60 cases of ASPEGIC 1000 AD PDR 15S</p> <p>In this case, it is always equal to the shipped quantity (category 101) described at the level of item E8.</p> <p>It is not very meaningful for detail boxes or for multi-product pallets...</p> <p>But in this case, if documented, it is equal to the sum of the shipped quantities (101) related to each item contained in the despatch unit</p>	

Segment	No.	Category	Type Size	Status	Definition	Example	Suggestions	Other message involved
D.2.6. Material handling instructions								
INSMAN	73	Handling instructions	an3	F		BIG	BIG Big size CRU Fragile (crushing risk) EAT Food HWC Fragile (handle with care) STR Restricted stacking UST Non stackable Other qualifiers may be used (see GS1 reference table)	
D.2.7. Dangerousness								
MATDAN ONU	74	Dangerousness	an7	C	This segment is used for packing lists. When necessary to report information on the item (in the case of detail package), the information is repeated in the corresponding dangerousness category 120.	65	Example: 65 Cytotoxic drugs	

Segment	No.	Category	Type Size	Status	Definition	Example	Suggestions	Other message involved
D.2.8. Transport and storage precautions								
MATDAN STK	75	Transport and storage precautions	an7	C	<p>This segment is used for packing lists.</p> <p>When necessary to report information on the item (in the case of detail package), the information is repeated in the corresponding Transport and storage precautions category 121.</p> <p>The qualifiers used and their corresponding codes are listed in the classification table defined by the CIP/ACL which is also used in the product sheet.</p>	03	<p>01 Protect from the air 02 Protect from heat 03 Protect from light 04 Protect from direct sunlight</p> <p>05 Protect from cold 06 Protect from freezing 07 Store in daylight 08 Store at room temperature.</p> <p>11 Freezing possible under certain conditions</p> <p>12 Store in freezer 13 Keep in a cool place (between 8-15°) 14 Keep refrigerated (between 2-8°)</p> <p>15 Keep in original packaging 16 Store in a dry place</p> <p>18 Store away from flame 19 Keep vial upright 21 Do not freeze 22 Do not refrigerate 23 Do not store with opened pouch 24 Do not pierce or burn even after use</p> <p>25 Do not refreeze 31 Keep box down flat 34 Do not fold 35 Do not shake</p>	
D.2.9. Handling precautions								

Segment	No.	Category	Type Size	Status	Definition	Example	Suggestions	Other message involved
MATDAN HAN	76	Handling precautions	an7	C	<p>This segment is used for packing lists.</p> <p>When necessary to report information on the item (in the case of detail package), the information is repeated in the corresponding Handling precautions category 122.</p> <p>The qualifiers used and their corresponding codes are listed in the classification table defined by the CIP/ACL which is also used in the product sheet.</p>	17	<p>09 After mixing with an isotonic solution</p> <p>10 Tightly recap after use</p> <p>11 Freezing possible under certain conditions</p> <p>15 Keep in original packaging</p> <p>17 The solution should be prepared immediately before use</p> <p>18 Store away from flame</p> <p>19 Keep vial upright</p> <p>20 Sterile single use device</p> <p>23 Do not store with opened pouch</p> <p>24 Do not pierce or burn even after use</p> <p>25 Do not refreeze</p> <p>26 Do not resterilise</p> <p>27 Discard after single use</p> <p>28 Do not use corks</p> <p>29 Do not use solution if cloudy</p> <p>30 Put vial back in its case after use</p> <p>31 Keep box down flat</p> <p>32 Keep tightly closed</p> <p>33 To be used immediately</p> <p>34 Do not fold</p> <p>35 Do not shake</p>	

Segment	No.	Category	Type Size	Status	Definition	Example	Suggestions	Other message involved
D.3. Identification of the despatch unit (coding and marking) within the hierarchical level described								
D.3.1. Marking on despatch unit								
IDMARK	77	Marking instructions	an3	O	Specifies the marking type used by the supplier on the packaging	17	<p>17 Supplier's instructions (identification)</p> <p>33E Marked with package sequence number</p> <p>99 No marking</p> <p>Description of what the marking contains This information should be consistent with category 51 'Marking type for the packaging'</p> <p>Code 17 is to be used when it is an identification No. internal to the supplier, it is not necessarily unique Code 33E is to be used when it is a unique SSCC (Serial Shipping Container Code)</p>	
D.3.2. Date(s) and time(s) related to the marking								
DATCOL 94	78	Production date	an35	C		200501020900 (January 2, 2005, at 9:00 AM)	<p>Optional only if this information is specified at the item level (category 107).</p> <p>Possible formats: YYYYMMDD YYYYMMDDHHMM YYYYMM</p> <p>If the format YYYYMM is used, this date is considered as a default value to be the end of the month</p>	

Segment	No.	Category	Type Size	Status	Definition	Example	Suggestions	Other message involved
DATCOL 36	79	Expiry date/Use-by-date	an35	C		20101120 (November 20, 2010)	<p>Compulsory if the expiry date exists and is unique for the despatch unit described (for instance, standard package) Otherwise, the information may be specified at the item level (category 108).</p> <p>As a rule, the Use-By-Date is considered identical to the Expiry Date</p> <p>Possible formats: YYYYMMDD YYYYMMDDHHMM YYYYMM</p> <p>If the format YYYYMM is used, this date is considered as a default value to be the end of the month.</p>	
DATCOL 361	80	Optimal best-before date (DLUO)	an35	C	Used to specify a 'best before' date when there is only one date for the despatch unit.		<p>Optional only if this information is specified at the item level (category 109).</p> <p>Possible formats: YYYYMMDD YYYYMMDDHHMM YYYYMM</p> <p>If the format YYYYMM is used, this date is considered as a default value to be the end of the month.</p>	

Segment	No.	Category	Type Size	Status	Definition	Example	Suggestions	Other message involved
D.3.3. Code related to the marking								
CODCOL BJ	81	Sequence number for box or pallet	an35	O		4545	It may be an internal No. or an SSCC (Serial Shipping Container Code) Type is specified in category 77: If category 77 indicates 17, the No. indicated here is an internal number; If category 77 indicates 33E, the No. indicated here is an SSCC	
CODCOL BN	82	Serial number	an35	C				
CODCOL BX	83	Batch number	an35	C		3344	Compulsory if the batch number exists and is unique for the despatch unit described (for instance, standard box) Otherwise, the information may be specified at the item level (category 88).	
CODCOL SRV	84	GTIN code of packaging	an35	F			Coding from the Logistics Unit	
CODCOL 128	85	GS1-128 syntax	an35	F			Characters found in the GS1-128 structure marking. (other than GS1 table, created here for the profession)	
E. DATA RELATED TO THE ITEMS								
E.1. Identification of the items for a given hierarchical level								
INFLIN	86	Code of ordered/delivered item	an35	O		3400930000120	As far as possible, it must be the code of the ordered item in order to deal with the cases of undelivered ordered items (delivered Qty=0 including or excluding a reason for 'remainder will follow'). Some laboratories already do this on their paper delivery slips. When impossible, (in the case of laboratories who cannot refer to the order information), it will be the code of delivered item. In this case, the undelivered ordered items are absent on the delivery slip and the distributor's IS interprets the information (or absence of information) with their own rules (Qty=0 including or excluding a remainder according to laboratory/item settings)	ORDER

Segment	No.	Category	Type Size	Status	Definition	Example	Suggestions	Other message involved
INFLIN	87	Identifier of item code	an3	O		02	<p>C07 CIP7 C13 CIP13 U07 UCD7 U13 UCD13 A07 ACL7 A13 ACL13 01 CIP7 or ACL7 02 CIP13 or ACL13 SRV GTIN SA Supplier's item number (internal No.) The C07, C13, U07, U13, A07, A13 codes are assigned by the CIP/ACL either with 7 characters or 13 characters (with prefix 3400 or 3401 according to GS1 agreement) SRV codes are GTIN codes assigned by the brand owner</p> <p>If the internal supplier code is identical to the CIP/ACL or GTIN code, the corresponding qualifiers must be used (and not the SA);</p> <p>SA qualifier is written in category 91 Value of the item's additional code, as complementary information. If the product has none of the standardized codes, the supplier will use their internal reference (SA code), the only item identifier here.</p> <p>When an ordered product is unavailable (i.e. not totally delivered or partially delivered) it is recommended to indicate the ordered product code in this category, then to indicate in category 101 Shipped quantity - including quantity zero if the product is not totally shipped - then the supplementary information in part E18 Quantity difference against the order (categories 123,124,125: value, nature, reason for deviation)</p>	ORDER

Segment	No.	Category	Type Size	Status	Definition	Example	Suggestions	Other message involved
E.2. Additional identification of the items for a given hierarchical level								
INFCOM 1 NB	88	Batch number	an35	C		ART45A254	Compulsory if the information exists. Caution: In case several batch Nos are delivered for the same item, in the same despatch unit, two parts (E1) 'Identification of the items for a given hierarchical level' must be generated with the same item code.	
INFCOM 1 SN	89	Serial number	an35	C				
E.3. Other additional identification of the items for a given hierarchical level								
INFCOM 2 to 5	90	Additional identification qualifier	an3	C	Used to give supplementary information on the item according to the qualifier No. used	4	<ul style="list-style-type: none"> 1 additional identification (for the geo code) 3 Replacing... (EAN or CIP/ACL code of substituted item) 4 Substituted by... (EAN or CIP/ACL code of substitute item) 5 Identification of free item (other item code: MA or internal reference, etc) 	ORDER
INFCOM 2 to 5	91	Value of the item's additional code	an35	C		3334576		ORDER

Segment	No.	Category	Type Size	Status	Definition	Example	Suggestions	Other message involved
INFCOM 2 to 5	92	Identification type of additional code	an3	C			C07 CIP7 C13 CIP13 U07 UCD7 U13 UCD13 A07 ACL7 A13 ACL13 01 CIP7 or ACL7 02 CIP13 or ACL13 SRV GTIN IN Number assigned by buyer SA Supplier's item number CG Geographical code (simply taken from the code transmitted by the wholesaler when ordering) AMM (MA) Marketing Authorization Qualifier 1 'additional identification' (category 90) must be associated with CG for the Geo code Qualifier 5 'Free item identification' (category 90) must be associated with AMM to indicate the marketing authorization	ORDER
E.4. Other additional information for item marking								
INFCOM 6	93	Additional identification for marking	an3	C	Used to recognize the type of marking used on the item's unit packaging	XX	This information is compulsory when it exists. XX Datamatrix XY RFID XW Barcode 128 XZ Barcode 39 50 Barcode EAN13 52 Barcode GS1-128 99 No marking	
E.5. Designation of the items								
DESART	94	Standard wording	an35	F	Description of the item	STANDARD WORDING OF ITEM 1B	Although it is optional, documenting this category is recommended so that the message is understood especially in case of damage	ORDER

Segment	No.	Category	Type Size	Status	Definition	Example	Suggestions	Other message involved
DESART	95	Organisation responsible for the code	an3	F		91	91 Assigned by supplier/buyer 92 Assigned by buyer	
DESART	96	Identification of the object description	an17	F		CU	CU Consumer unit DU Despatch unit VQ Product with variable quantity TU Marketed unit IN Invoicing unit	ORDER
E.6. Physical dimensions of the unit								
MESART HT	97	Height	n18	F		200	In mm	
MESART LN	98	Length	n18	F			In mm	
MESART WD	99	Width	n18	F			In mm	
E.7. Unit weight								
MESART G	100	Weight	n18	F		500	Format: 999.999 grams	
E.8. Quantity of items								
QTEART 12	101	Shipped quantity	n15	O	Specifies the number of shipped units in the despatch unit(s) described in category 50	100	Expressed in parts or kg	
QTEART 59	102	Quantity per distribution unit	n15	F	Specifies the number of consumer units in the marketed unit		Expressed in parts or kg Expressed in parts or kg Examples: Number of units contained in an organizer; number of doses per marketing unit (x tablets per case)	ORDER

Segment	No.	Category	Type Size	Status	Definition	Example	Suggestions	Other message involved
QTEART 192	103	Free quantity	n15	F	Specifies the number of free ordered units		The specified quantity is already included in the shipped quantity. Understand: 'X' shipped pieces INCLUDING 'Y' free pieces Expressed in parts or kg	ORDER
QTEART 193	104	Free quantity included	n15	F	Specifies the number of free units not ordered		The specified quantity is already included in the shipped quantity. Understand: 'X' shipped pieces INCLUDING 'Y' free pieces	
QTEART 249	105	Quantity of samples	n15	F	Specifies the number of sample items		The specified quantity is already included in the shipped quantity. Understand: 'X' shipped pieces INCLUDING 'Y' sample pieces Expressed in parts or kg	ORDER
E.9. Original country								
PAYORI	106	Original country	an3	F	Specifies the original country code of the supplier of product (manufacturing)	FR	ISO 3166 Format	
E.10. Expiry date and time for the items								
DATART 94	107	Production date	an35	F		20050201 (February 1 st , 2005)	Used with detail boxes or bulk products Otherwise, use category 78 at the despatch unit level Possible formats: YYYYMMDD YYYYMMDDHHMM YYYYMM If the format YYYYMM is used, this date is considered as a default value to be the end of the month	

Segment	No.	Category	Type Size	Status	Definition	Example	Suggestions	Other message involved
DATART 36	108	Expiry date/Use-by-date	an35	C	As a rule, the Use-By-Date is considered identical to the Expiry Date	20101120 (November 20, 2010)	Compulsory when it is an item delivered in a detail box (heterogeneous non standard box) or bulk items. Otherwise, use category 79 at the despatch unit level Possible formats: YYYYMMDD YYYYMMDDHHMM YYYYMM	
DATART 361	109	Optimal best-before date (DLUO)	an35	F			Used when it is an item delivered in a detail box (heterogeneous non standard box) or bulk items. Otherwise, use category 80 at the despatch unit level Possible formats: YYYYMMDD YYYYMMDDHHMM YYYYMM	

Segment	No.	Category	Type Size	Status	Definition	Example	Suggestions	Other message involved
E.11. Price of the item								
TXTLIB	110	Pricing type	n3	C	Used to describe the various regulatory prices which may be applied to the packaging (public price tax incl., TFR price, LPPR price). These are the prices of physically delivered goods (not the reference prices which are indicated on the product sheet) It is a very important data for the wholesalers as it is processed as a logistics data which is subjected to validity controls upon receipt, in the same way as the quantity or batch number or expiry date. Generally, the delivery of the same item is single-priced	TTC	ZZZ Defined by mutual agreement TTC Public price tax included (marked on 'vignette') TFR TFR Price (Reference Pricing) LPP LPPR Price (LPPR=List of refundable products and services) 999 No price marked 888 Not communicated by the laboratory If the laboratory has the information, the latter is compulsory in the message Otherwise (actual technical inability to reproduce the information), the '888' price type should be used to specify that the price may not be communicated For all products without 'vignette' use the '999' price type: No price marked	
TXTLIB	111	Price of the item in euros	n35	C		15,000		
E.12. References (order / order response)								
REFART	112	Buyer order number	an70	O	Order No. assigned by the buyer when the order was transmitted It is used by the message recipient to automatically compare the order and the despatch advice	54321	When remaining goods are delivered, it is always the No. of initial order	Order receipt ORDER
REFART	113	Response number upon ordering	an70	F	When there is an 'order acknowledgment of receipt'			Order receipt
E.13. Date and time of reference documents								
DATEREF	114	Date of customer's order	an35	F	It is the date of the order that originated the shipping (see category 112)	20091018 (October 18, 2009)		ORDER Order receipt

Segment	No.	Category	Type Size	Status	Definition	Example	Suggestions	Other message involved
DATEREF	115	Response date upon ordering	an35	F	Related to the 'Response No. upon ordering' if there is one (see category 113)			Order receipt
<p>E.14. Final delivery This paragraph is provided to deal with particular cases of deliveries made following an initial delivery (to another department, for example) intended for specific treatments at the distributor's or at the hospital. Examples: Stupefacient department, customized orthopaedic surgery, etc. These data are returned from the information that was previously transmitted by the distributor to the supplier (via the order message for instance)</p>								
LOCFIN	116	Ultimate place of delivery	an25	F	GLN code or free text Indicates the 'actual sub-recipient' within the actual recipient (used by hospitals for distribution in the departments)	0123456789012	Example: Narcotics and dangerous drugs department clearly localized	ORDER
LOCFIN	117	Location name	an256	F		NARCOTICS & DANGEROUS DRUGS DEPARTMENT		ORDER
DESFIN	118	Ultimate recipient	an35	F	It is a code or name which identifies a person or an ultimate recipient	PHARMACIE DE L EGLISE	Example: Patient or Pharmacy (customized orthopaedic surgery for a patient from a retail Pharmacy)	ORDER
QTEFIN	119	Quantity	n35	F	Quantity to be delivered to the ultimate customer	120	Expressed in kilograms or parts	ORDER
<p>E.15. Dangersité</p>								
DANART ONU	120	Dangerousness	an7	C		65	Example: 65 Cytotoxic drugs	

Segment	No.	Category	Type Size	Status	Definition	Example	Suggestions	Other message involved
E.16. Transport and storage precautions								
DANART STK	121	Transport and storage precautions	an7	C	The qualifiers used and their corresponding codes should be listed in the classification table defined by the CIP/ACL which is also used in the product sheet.	03	01 Protect from the air 02 Protect from heat 03 Protect from light 04 Protect from direct sunlight 05 Protect from cold 06 Protect from freezing 07 Store in daylight 08 Store at room temperature. 11 Freezing possible under certain conditions 12 Store in freezer 13 Keep in a cool place (between 8-15°) 14 Keep refrigerated (between 2-8°) 15 Keep in original packaging 16 Store in a dry place 18 Store away from flame 19 Keep vial upright 21 Do not freeze 22 Do not refrigerate 23 Do not store with opened pouch 24 Do not pierce or burn even after use 25 Do not refreeze 31 Keep box down flat 34 Do not fold 35 Do not shake	

Segment	No.	Category	Type Size	Status	Definition	Example	Suggestions	Other message involved
---------	-----	----------	--------------	--------	------------	---------	-------------	---------------------------

E.17. Handling precautions

Segment	No.	Category	Type Size	Status	Definition	Example	Suggestions	Other message involved
DANART HAN	122	Handling precautions	an7	C	The qualifiers used and their corresponding codes should be listed in the classification table defined by the CIP/ACL which is also used in the product sheet.	17	09 After mixing with an isotonic solution 10 Tightly recap after use 11 Freezing possible under certain conditions 15 Keep in original packaging 17 The solution should be prepared immediately before use 18 Store away from flame 19 Keep vial upright 20 Sterile single use device 23 Do not store with opened pouch 24 Do not pierce or burn even after use 25 Do not refreeze 26 Do not resterilise 27 Discard after single use 28 Do not use corks 29 Do not use solution if cloudy 30 Put vial back in its case after use 31 Keep box down flat 32 Keep tightly closed 33 To be used immediately 34 Do not fold 35 Do not shake	

Segment	No.	Category	Type Size	Status	Definition	Example	Suggestions	Other message involved
E.18. Quantity difference against the order								
DIFQTE	123	Signed deviation value	n15	C	Provides the recipient with the value of the quantity difference against the order	- 40	<p>The value difference sign is:</p> <ul style="list-style-type: none"> - <i>Negative</i> if the delivered quantity is not sufficient. <p>It is the remaining quantity to be delivered against the ordered quantity from the original order, decremented with the various already delivered quantities.</p> <p>Example: Quantity generated by an order remainder (or even a remainder's remainder)</p> <ul style="list-style-type: none"> - <i>Positive</i> if the delivered quantity is in excess. <p>It is the excess delivered quantity against the ordered quantity.</p> <p>Example: Quantity which was rounded to the upper unitization or guide; quantity for the first delivery of a new product, and order that was not generated by the wholesaler.</p> <p>Compulsory as soon as there is a difference between "despatch" quantity and "ordered" quantity</p>	
DIFQTE	124	Nature of deviation	an3	C	Provides the recipient with the nature of the quantity deviation against the order	BP	<p>BP Partial despatch - missing goods (or remainders follow)</p> <p>CP Partial despatch - considered as complete (no remainders follow)</p> <p>Compulsory as soon as there is a difference between "despatch" quantity and "ordered" quantity</p>	
DIFQTE	125	Reason for deviation	an3	C	Provides the recipient with reason for deviation against order	WR	<p>WR Temporarily unavailable</p> <p>AB Suspended production</p> <p>RA Restricted / Quota</p> <p>PC Packaging changes</p> <p>MP First delivery of a new product</p>	

Segment	No.	Category	Type Size	Status	Definition	Example	Suggestions	Other message involved
E.19. Date and/or time of balance shipping								
DATSOL	126	Date and time	an35	F	The sender provides the date and time when the despatch remainder is to be sent	20091030 (October 30, 2009)	Format: YYYYMMDDHHMM or YYYYMMDD	
F. MESSAGE ENDING INFORMATION								
FINMSG	127	Total number of packages	n18	O		30		

Packaging sequence information

(EDIPHARM Source: 'Standard Format – DESPATCH ADVICE – Wholesalers Laboratories/Agents Profile – DESADV A1')

Purpose: Identify the levels in the load. It means to identify:

- The structure of the global load (called '1st level' or 'Shipping')
- Then the hierarchy of the subsequent levels via the contents link, so as to describe the composition of pallets and cartons. A containing level is called 'parent level'. The level(s) contained in the upper level are called 'child levels'.

First example of despatch description:

1 DESADV = 1 Order

A Laboratory identified with robot code 271 (e.g. Eurodep) sends a despatch advice to the wholesaler-distributor identified with its robot code 015 (e.g. Cerp Rouen).

The despatch which is described in the advice bears the following special features:

- The delivery point is one of the agencies of the wholesaler which is identified with CIP code 599002.
- The despatch advice number is 12345 and it is sent on October 19, at 4:15 PM.
- The delivery slip number (which is noted on the paper slip) is 3459762.
- The despatch follows order No. 54321 which was remotely transmitted on October 18 at 12:30 PM.
- Shipment of the goods is scheduled on October 19 at 4:00 PM,
- And should arrive at its destination on October 23 (within the desk opening hours).

The despatch consists of two pallets and one box:

First pallet:

- Is identified with code 4545
- Contains 20 boxes of the same product 'A' identified with CIP code 3400930000120
- In every box, there are 35 consumer units at the public price of €15.00 incl.tax
- The pallet weighs 93 kilograms and its volume is 0.5 m³
- The pallet width is 800 mm and height 1200 mm
- The product batch number is 3344 and the expiry date is November 20, 2010.

Second pallet:

- Is identified with code 6767
- The pallet weighs 306 kilograms, its volume is 2 m³ and it contains:
 - 5 boxes of product 'B' 3400934037177 (package of 100 CU), with lot number 678,
 - 3 boxes of product 'C' 3400932538362 (package of 40 UC), with
 - Lot number 789 for 2 cartons
 - And lot number 234 for the last.
 - 1 detail box containing:
 - 10 products 'D' with CIP code 3400932351008; their distinctive feature is that they are cytotoxic drugs, with lot number 333 and expiry date November 1st, 2011.
 - 5 products 'E' with CIP code 3400935780478; their distinctive feature is that they replace a former pack size (which was ordered with previous CIP code 3400935780397), lot number 9999, and expiry date October 1st 2012.

The box is a 50 CU box:

- Units identified with product code 'F' 3400935955838, it is aspirin,
- Including 30 CU with batch number 323
- and 20 CU with batch number 324
 - Expiry date is March 2011,
 - The box weighs 7.5 kilograms and its volume is 0.03 m³
 - The ordered quantity was 90 CU, and 40 are missing and will follow as a remainder.

Physical representation of the despatch:



Despatch advice message:

- No. 12345, generated on Oct 19 at 4:15 PM
- Goods left on Oct 19, at 4:00 PM
- Arrival planned on Oct 23
- Delivery slip No.: 3459762
- Carrier delivery No.: 586674375695430238

Despatch contents: 2 pallets and 1 box

1 pallet: No.4545
93 Kg 0.5 m³

20 standard boxes

- Marked 120 to 139
- CIP code: 3400930000120
- 35 dispensing units per box
- Public price incl. tax: 15,00 €
- Lot No.: 3344
- Expiry Date: Nov 20, 2010

1 pallet: No. 6767
306 Kg 2 m³

5 standard boxes

- 5 CIP code: 3400934037177
- 100 dispensing units per box
- Lot No.: 678

3 standard boxes

- CIP code: 3400932538362
- 40 dispensing units per box
- Lot No.: 789

1 detail box

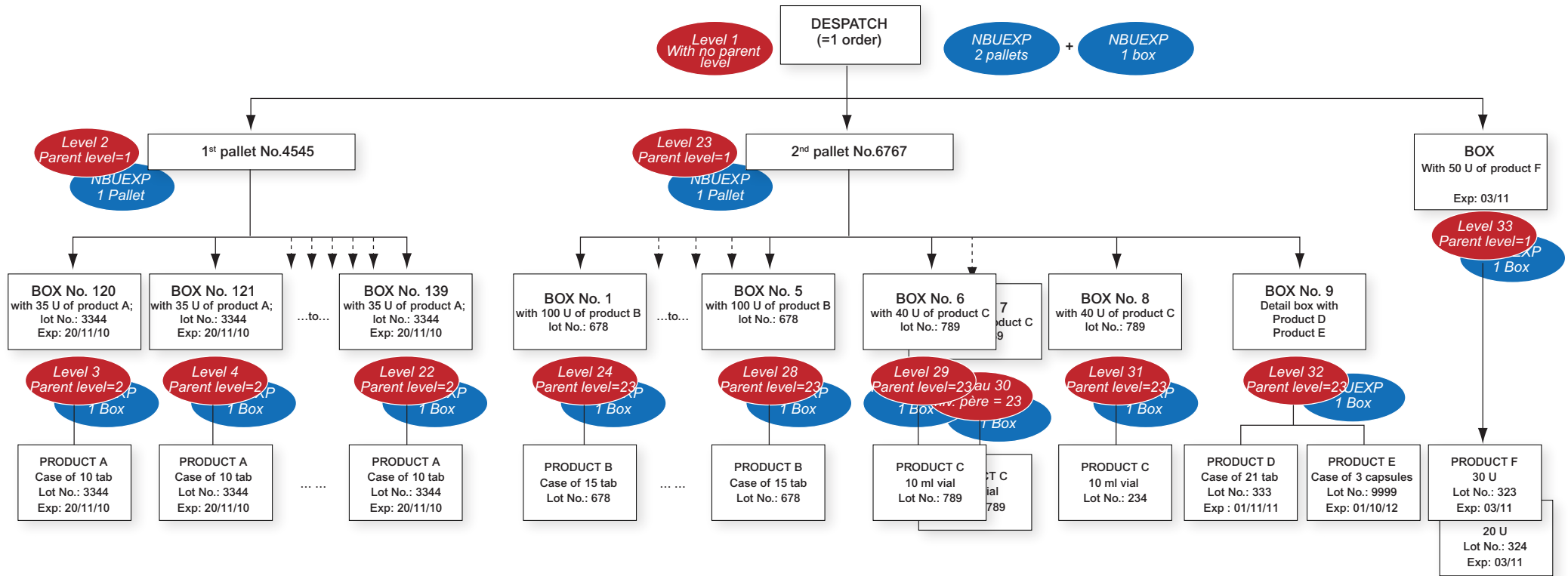
- 10 dispensing units with CIP code: 3400932351008
– Cytotoxic drug, lot No.: 333 Expiry Date: Nov 1st, 2011
- 5 dispensing units with CIP code: 3400935780478
– Substitute drug, lot No.: 9999 Expiry Date: Oct 1st, 2012

1 box: 7.5 Kg
0,03 m³

1 box

- 50 dispensing units with CIP code: 3400935955838
- Expiry Date: March 2011
- 30 dispensing units with lot No.: 323
- 20 dispensing units with lot No.: 324
- The order was 90 dispensing units, 40 are missing which will follow as a remainder

Tree structure pattern of despatch:



Principle assumed to build the message (segment sequencing):

It is required to use a 'vertical' rather than a 'horizontal' description of the despatch contents

In this example, there will be: 33 recordings of 'LEVEL' segments to describe the hierarchical links in the despatch,
 And 34 'NBUEXP' segments to identify the packaging type described in the message continuation (pallet or box).
 Note: For the 1st LEVEL ('Shipping') there will be 2 NBUEXP segments (1 to describe the 2 pallet type despatch units and 1 for the free carton)

In and of itself, level hierarchy is limited to a maximum of 7 hierarchical branches:

- Shipping (the carrier's truck)
 - Pallet
 - Package
 - Unitization
 - Dispensing unit (case)
 - Secondary packaging (blister)
 - Consumer unit (tablet)
- } Levels that are currently used

Packaging sequence information

(EDIPHARM Source: 'Standard Format – DESPATCH ADVICE – Wholesalers Laboratories/Agents Profile – DESADV A1') 'Standard Format – DESPATCH ADVICE – Wholesalers Laboratories/Agents Profile – DESADV A1'

2nd example of despatch description:

1 DESADV = 3 Orders

A Laboratory identified with robot code 271 (e.g. Eurodep) sends a despatch advice to the wholesaler-distributor identified with its robot code 015 (e.g. Cerp Rouen).

The despatch which is described in the advice bears the following special features:

- The delivery point is one of the agencies of the wholesaler which is identified with CIP code 599002.
- The despatch advice number is 12345 and it is sent on October 19, at 4:15 PM.
- The delivery slip number (which is noted on the paper slip) is 3459762.
- The despatch follows 3 orders with the following numbers:
 - No. 54320 remotely transmitted on October 17 at 5:30 PM.
 - No. 54321 remotely transmitted on October 18 at 12:30 PM.
 - No. 54322 remotely transmitted on October 18 at 2:45 PM.
- And should arrive at its destination on October 23 (within the desk opening hours).

The despatch consists of two pallets and one box:

The first pallet:

- Is identified with code 4545
- Contains the products coming from orders No. 54320 transmitted on October 17 at 5:30 PM and No. 54321 transmitted on October 18 at 12:30 PM
- Contains 20 boxes of the same product 'A' identified by CIP code 3400930000120
- In every box, there are 35 consumer units at the public price of €15.00 incl.tax
- The pallet weighs 93 kilograms and its volume is 0.5 m³
- The pallet width is 800 mm and height 1200 mm
- The product batch number is 3344 and the expiry date is November 20, 2010.

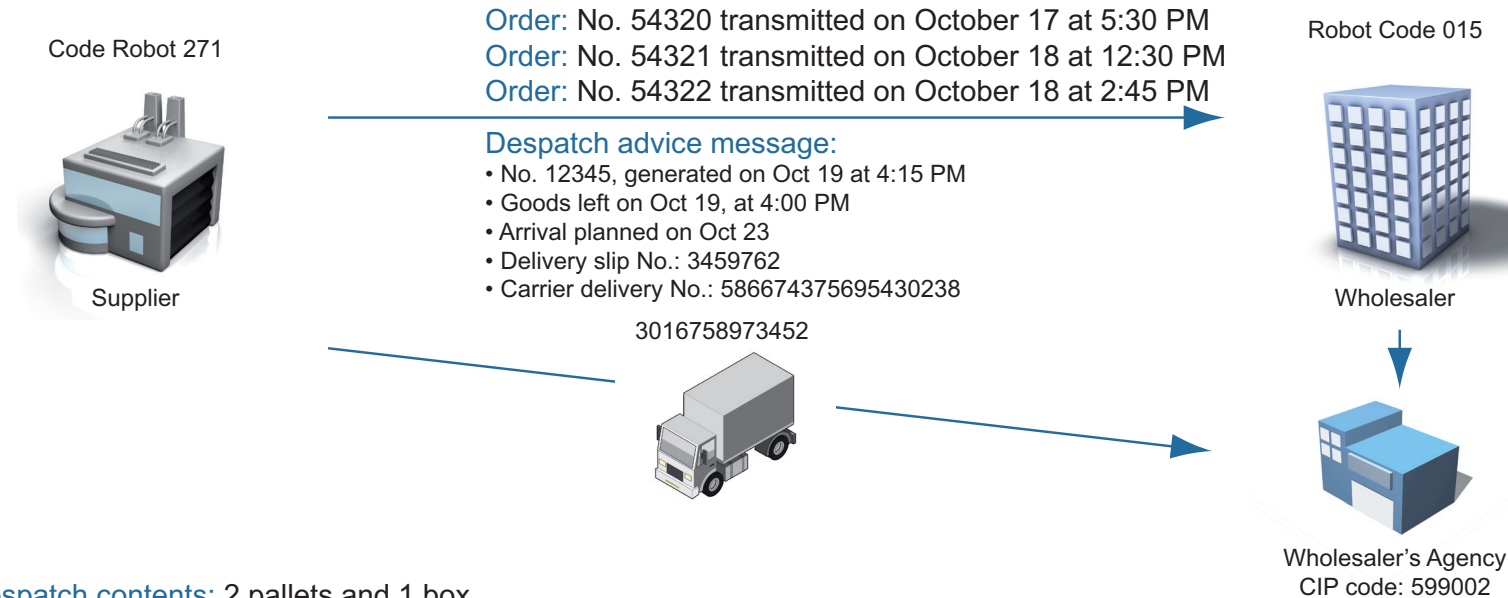
Second pallet:

- Is identified with code 6767
- Contains products coming from order No. 54322 transmitted on October 18 at 2:45 PM.
- The pallet weighs 306 kilograms, its volume is 2 m³ and it contains:
 - 5 boxes of product 'B' 3400934037177 (package of 100 CU), with lot number 678,
 - 3 boxes of product 'C' 3400932538362 (package of 40 UC), with
 - Lot number 789 for 2 cartons
 - And lot number 234 for the last.
- 1 detail box containing:
 - 10 products 'D' with CIP code 3400932351008; their distinctive feature is that they are cytotoxic drugs, with lot number 333 and expiry date November 1st, 2011.
 - 5 products 'E' with CIP code 3400935780478; their distinctive feature is that they replace a former pack size (which was ordered with previous CIP code 3400935780397), lot number 9999, and expiry date October 1st 2012.

The box is a 50 CU box:

- Contains products coming from order No. 54321 transmitted on October 18 at 12:30 PM.
 - Units identified with product code 'F' 3400935955838, it is aspirin,
 - Including 30 CU with batch number 323
 - Expiry date is March 2011,
- Contains products coming from order No. 54322 transmitted on October 18 at 2:45 PM.
 - Units identified with product code 'F' 3400935955832, it is aspirin,
 - Including 20 CU with batch number 323
 - Expiry date is March 2011,
- The box weighs 7.5 kilograms and its volume is 0.03 m³

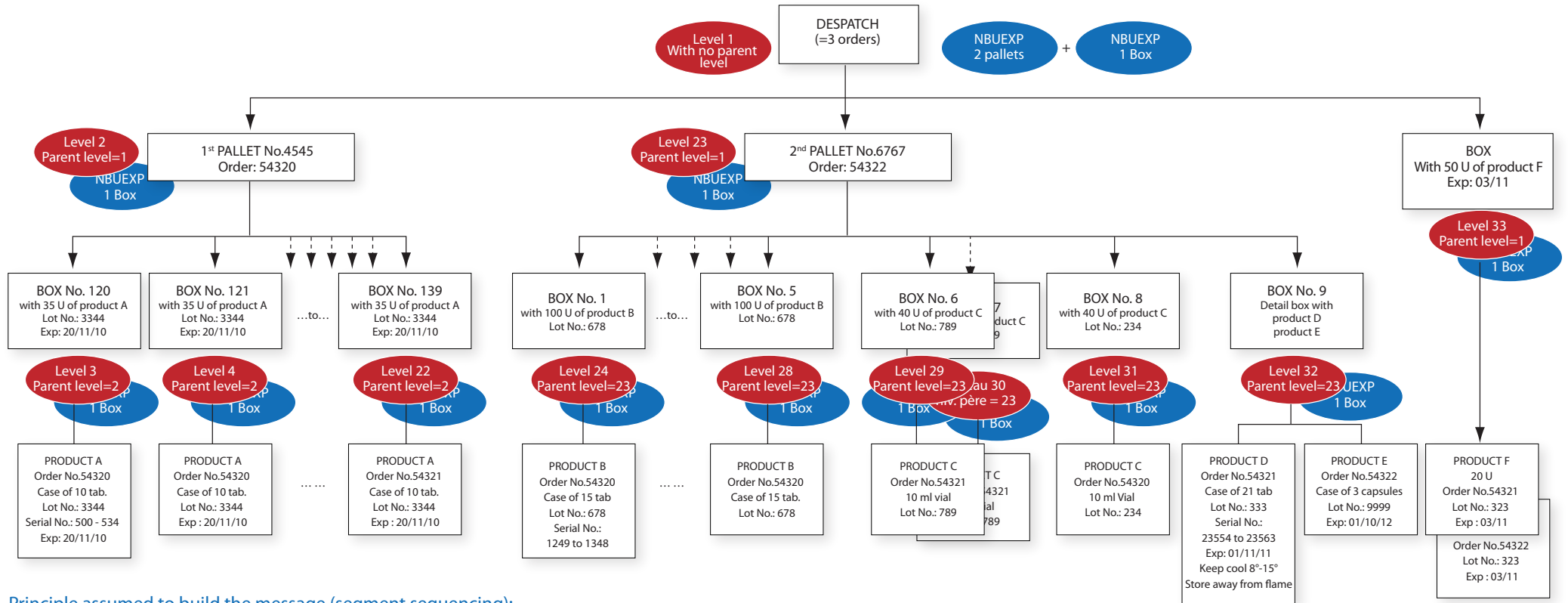
Physical representation of the despatch:



Despatch contents: 2 pallets and 1 box

<p>1 pallet: No. 4545 93 Kg 0.5 m³ Order: 54320</p> <p>20 standard boxes</p> <ul style="list-style-type: none"> - Marked 120 to 139 - CIP code: 3400930000120 - 35 consumer units per box - Public price incl. tax: 15,00 € - Lot No.: 3344 - Expiry Date: Nov 20, 2010 	<p>1 pallet: No. 6767 306 Kg 2 m³ Order: 54322</p> <p>5 standard boxes</p> <ul style="list-style-type: none"> - CIP code: 3400934037177 - 100 consumer units per box - Lot No.: 678 <p>3 standard boxes</p> <ul style="list-style-type: none"> - CIP code: 3400932538362 - 40 consumer units per box - Lot No.: 789 <p>1 detail box</p> <ul style="list-style-type: none"> - 10 consumer units with CIP code: 3400932351008 – Cytotoxic drug, lot No.: 333 Expiry Date: Nov 1st, 2011 - 5 consumer units with CIP code: 3400935780478 – Substitute drug, lot No.: 9999 Expiry Date: Oct 1st, 2012 	<p>1 box: 7.5 Kg 0.03 m³</p> <p>1 box</p> <ul style="list-style-type: none"> - 50 consumer units with CIP code: 3400935955838 - Order No. 54321 remotely transmitted on October 18 at 12:30 PM - Order No. 54322 remotely transmitted on October 18 at 2:45 PM - Expiry Date: March 2011 - Lot No.: 323
--	--	---

Tree structure pattern of despatch:



Principle assumed to build the message (segment sequencing):

It is required to use a 'vertical' rather than a 'horizontal' description of the despatch contents

In this example, there will be: 33 recordings of 'LEVEL' segments to describe the hierarchical links in the despatch,
 And 34 'NBUEXP' segments to identify the packaging type described in the message continuation (pallet or box).
 Note: For the 1st LEVEL ('Shipping') there will be 2 NBUEXP segments (1 to describe the 2 pallet type despatch units and 1 for the free carton)

- In and of itself, level hierarchy is limited to a maximum of 7 hierarchical branches:
- Shipping (the carrier's truck)
 - Pallet
 - Package
 - Unitization
 - Dispensing unit (case)
 - Secondary packaging (blister)
 - Consumer unit (tablet)
- } Levels that are currently used

Abstract

The dematerialized exchanges between trading partners of the pharmaceutical chain make it possible to automate and secure the data transmission and data integration into information systems.

This systematization is critical as systematized exchanges also support the adequate implementation of human-use medicinal product traceability by January 1st, 2011 (see Cahiers CIP/ACL No1 and 2).

This reference document, defined by all the actors in the pharmaceutical chain (distributors, agents and manufacturers), describes the new 'whole despatch advice: DESADV' message; the purpose of this message is to provide information on the shipment of the goods in order to anticipate their receipt.

This recommendation stipulates that manufacturers should implement the new 'whole Despatch Advice' message by July 1st, 2009.

KEY WORDS

Dematerialization of Exchanges – Dematerialized Exchanges – Dematerialized Messages – EDI Messages – Despatch Advice – Whole Despatch Advice – Delivery – Shipping – DESADV – Receipt – Disputes



95, rue de Billancourt – 92100 BOULOGNE-BILLANCOURT

Tél : 01 49 09 62 60 – Fax : 01 49 09 62 73

<http://www.cipclub.org>

<http://www.aclclub.org>